

PERMEABLE PAVING CASE STUDY

Project Name: Coopers Road, Southwark, London
Client: Peabody Housing Association
Contractor: Graham Construction Ltd
Project: 500m² Breccia Bianco 210 x 210 x100
Products Used: Sudsflow Spacers
Date: March 2015



The Site

Peabody's Community Development Team has worked alongside the Local Authority to regenerate the Coopers Road Estate, which includes building new Rental, Shared-Ownership and Private properties. Focus has been placed on providing good quality communal landscaping with a level 4 development code for sustainable homes.

The Challenge

To create a paved walkway for pedestrian and service vehicle access that met the requirements of SUDS legislation, using paving units specified by the Architect that were not SUDS specific.

The Solution:

Sudsflow spacers were used to create an exact joint width between the blocks & flags, then the joints were filled with 2-6mm washed aggregate. This allows rainwater to infiltrate directly into a suitable sub-grade allowing it to attenuate before release, thus meeting SUDS regulations.

Benefits:

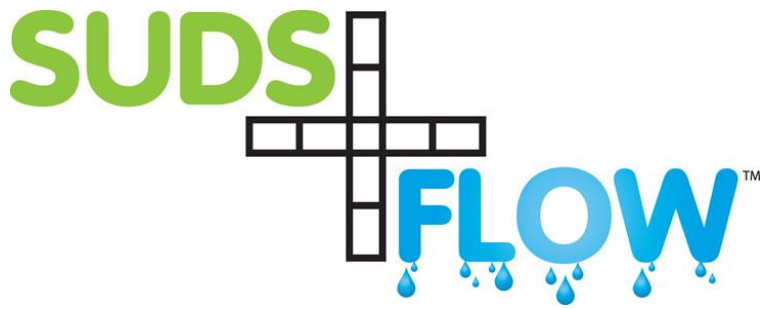
- Turns modular paving units into a permeable system by opening the joints
- Helps to prevent movement over time
- Specification no longer restricted to purpose made permeable pavers
- Clean and controlled water discharge



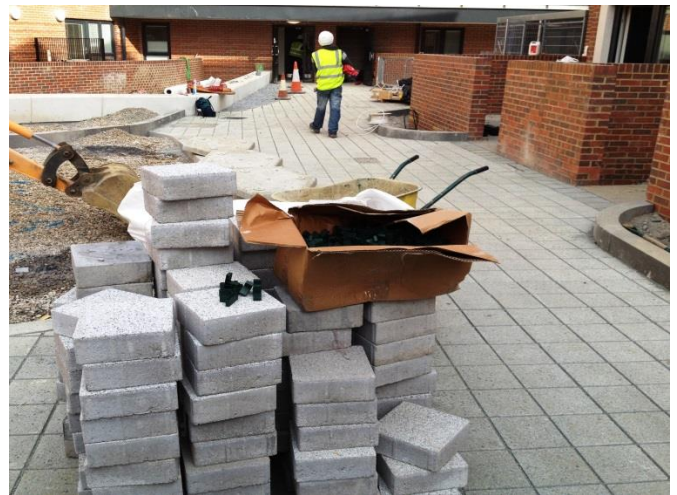
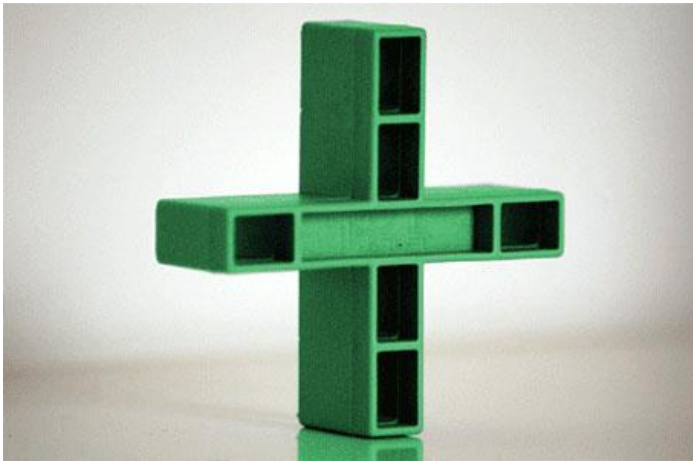
www.gapfast.com

enquiries@gapfast.com

Resigap Ltd • Resiblock House • Archers Fields Close • Basildon • SS13 1DW



PERMEABLE PAVING CASE STUDY



www.gapfast.com

enquiries@gapfast.com

Resigap Ltd • Resiblock House • Archers Fields Close • Basildon • SS13 1DW