

Project Name: East Midlands Designer Outlet
Contractor: Jordan Road Surfacing Ltd
Project: 2.500m² AI Natural Granite Flags 600 x 400 x 80
Products Used: Gapfast Spacers & Sika Pave fix Plus
Date: February 2014



The Site

Paving units within the pedestrian and service vehicle access areas had been laid with irregular spacing between the paving units. This led to the breakup of the paved areas, which not only looked poor but caused tripping accidents.

The Challenge

Engineers required equal spacing and a method to strengthen the paved areas. The client required attractive aesthetics with uniformed jointing.

The Solution:

New paving was installed using Gapfast Spacers to provide an exact joint width between flags. Once covered by Sika Pave Fix Plus, the spacers are invisible and stay locked in place to make paving stronger.

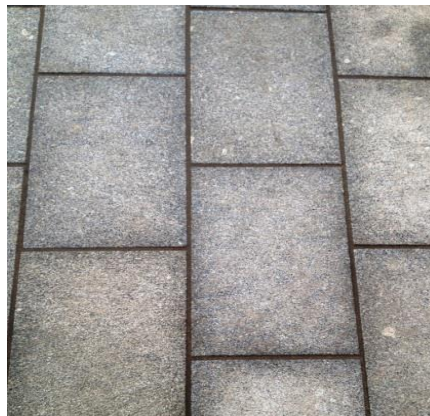
Benefits:

- Ensure accurate 10mm joints
- Strengthens paved areas
- Helps prevent movement over time
- Can be used for stacked or offset patterns

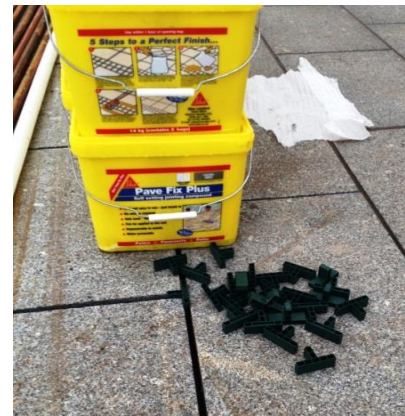
Before



After



Products Used



WWW.GAPFAST.COM

Resigap Ltd • Resiblock House • Archers Fields Close • Basildon • Essex • SS13 1DW

enquiries@gapfast.com